

SHEARFORCE

EQUIPMENT



ATTACHMENT CATALOGUE

ShearForce Equipment is the hydraulic attachment division of West Coast Machinery. Along with our work truck equipment division, Work Truck West, we believe that you deserve to have your needs met every single time you work with us.

OUR STORY

Established in 1973, West Coast Machinery takes great pride in our history and our reputation. With three locations in Langley, BC, Airdrie, AB, and Leduc, AB, ShearForce Equipment will continue to uphold this high standard of excellence moving into the future. Our goal is simple – to seek out the best of the best, and make it available to you. Our top suppliers include LaBounty, Xcentric, Shearex, Gilbert, Rammer, Stanley, and Simex. We've also introduced our own ShearForce branded hammers, shears, rotating/fixed pulverizers, grapples, static rippers, magnets, post drivers, compactors, and mowers that offer power and durability. In our never-ending search for high-productivity attachments, we've also added hydraulic rippers and crusher buckets to our inventory. In order to support better utilization of our specialized attachments, we've included ready to work rental excavator packages. All our hydraulic attachments are available for rent allowing our customers to take on more specialized short-term projects without the full cost of ownership.

As we've done with West Coast Machinery for generations, ShearForce stands behind its products with comprehensive customization, maintenance, and repair services.

OUR PEOPLE

ShearForce Equipment prides itself on its people. The experienced management team, knowledgeable sales staff, and expert service technicians are all working together to ensure that your unique needs are met.

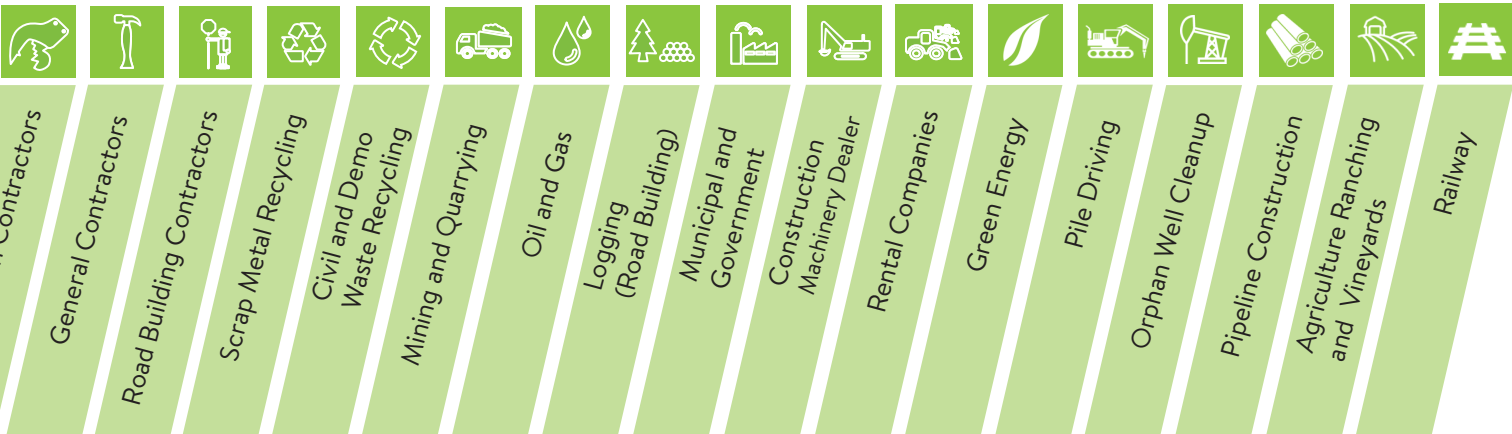


CONTENTS

Rental Equipment.....	Page 4-5
ShearForce SM Hammers.....	Page 6-7
ShearForce Eco & HR Hammers.....	Page 8-9
ShearForce Concrete & Demolition Pulverizers.....	Page 10-11
ShearForce Rotating Demolition Crackers & Grapples.....	Page 12-13
LaBounty & ShearForce Scrap and Demolition Shears.....	Page 14-15
ShearForce Scrap & Demolition Magnets.....	Page 16-17
ShearForce Static Rippers & Gilbert Grizzly Pile Drivers....	Page 18-19
Gilbert HD Pile Hammer & ShearForce Post Kings.....	Page 20-21
ShearForce & Rammer Compactors.....	Page 22-23
Stanley Compactors & ShearForce Mowers.....	Page 24-25
Shearex Mulchers & Xcentric Rippers.....	Page 26-27
Xcentric Crusher Buckets & Multavex Screening Buckets..	Page 28-29
Simex VSE Screening Buckets & Rotary Cutters.....	Page 30-31
Motofog Dust Suppression & Tinbin Dry Vacs.....	Page 32-33
Yamamoto Rock Splitters.....	Page 34
Product and Support.....	Page 35

WE'VE GOT EQUIPMENT TO SUIT YOUR INDUSTRY NEEDS.

Inside you'll find these icons, which allow you to quickly find the equipment especially designed for use within your industry sector.



RENTAL EQUIPMENT

Whether you need to rent an attachment, an excavator, or both, we've got you covered for your next project.

We know that buying a specific hydraulic attachment isn't always the best option for your business. Our fleet of rental equipment is in-stock and available to provide a cost-effective solution for your temporary equipment rental or replacement needs.

For all of your temporary equipment needs we offer multiple rental options, including:

- **Short and long-term rentals**
- **Rental Purchase Option – apply your rental fees to future purchase**
- **Freight and transportation management**
- **Heavy Duty Technicians to plumb/set up your excavator**

Get your job done faster with our rental excavator + attachment combos!

EXCAVATORS. ATTACHMENTS. SHEARFORCE RENTS.

DAILY, WEEKLY, AND MONTHLY RENTALS AVAILABLE.

5 Ton Excavators
8 Ton Excavator
25 Ton Excavators
30 Ton Excavator
36 Ton Excavator
45 Ton Excavator



* We can source and supply any size you need

CALL US FOR RATES AND AVAILABILITY



ALL OF OUR ATTACHMENTS ARE AVAILABLE FOR RENT!

Screening Buckets	Hammers/Breakers	Scrap and Demolition Magnets
Hydraulic Rippers	Demolition and Rotating Pulverizers	Mulchers
Static Rippers	Flail Mowers	Stump Grinders
Compactors/Hoe-Packs	Scrap and Demolition Shears	Dust Suppression Equipment
Crusher Buckets	Demolition Grapples	Rotary Cutters
Universal Processors	Rock Splitters	Pile Drivers
Augers	Post Drivers	Dry Vacs



WATCH VIDEOS OF OUR RENTAL FLEET AT WORK AT SHEARFORCE.CA.



SHEARFORCE SM HAMMERS

Add the power of ShearForce hydraulic hammers to your equipment fleet.

ShearForce SM Series hydraulic hammers offer exceptional value for your construction and demolition projects. From initial purchase to maintenance and repairs, these hammers hit harder and last longer.

- 16 models to fit 0.75 - 80 ton carriers.
- Models from 175 to 15,000 ft. lb. impact class.
- Huge inventory of hammers on the ground and support across Canada.
- Anti-blank firing system (SM15-610) increases the lifespan of all components.
- Industry Leading Warranty.

Model	Energy Class (ft lb)	Blows per minute	Weight (lbs)	Tool Diameter (in)	Oil Flow (gpm)	Max Operating Pressure (psi)	Carrier Weight (tons)
SM1	175	700-1500	158	1.5	2.6 - 4.2	1,600	0.75-1.8
SM2	325	700-1500	326	1.57	4-9	1,800	1-3
SM3	400	450-1150	479	2.17	6-14	1,900	2-4.5
SM5	550	400-1100	569	2.36	9-16	1,900	2.5-6
SM5-SL	550	400-1100	710	2.36	9-16	1,900	Skid Steer
SM7	750	500-750	730	2.68	10-18	1,900	4-7
SM9	1,000	460-750	970	2.93	12-23	1,900	5-10

SM10	1,500	400-800	1,100	3.35	12-24	2,200	6-13
SM15	2,500	400-750	2,156	3.94	21-29	2,300	10-16
SM18	3,000	400-700	2,792	4.72	23-32	2,500	13-21
SM20	5,000	350-600	4,020	5.31	26-40	2,600	16-24
SM25	6,000	350-500	4,410	5.51	32-48	2,600	18-26
SM30	7,000	300-450	5,440	5.91	40-56	2,600	25-30
SM35	8,000	300-450	5,988	6.10	48-64	2,600	28-35
SM45	10,000	250-400	7,010	6.50	53-69	2,600	30-45
SM510	13,500	250-400	9,380	7.08	66-79	2,320	40-60
SM610	15,000	200-350	12,400	7.68	69-95	2,610	48-80





SHEARFORCE ECO SERIES HAMMERS

ShearForce Eco Series Hammers are simple, efficient, and powerful. These hammers offer great value for your toughest construction and demolition projects.

- 7 models to fit 5-45 ton carriers.
- Models from 550-10,000 ft. lb. impact class.
- Extremely powerful and durable.
- 1-Year limited warranty.



Model	Energy Class (ft lb)	Blows per minute	Weight (lbs)	Tool Diameter (in)	Oil Flow (gpm)	Max Operating Pressure (psi)	Carrier Weight (tons)
H60E	550	400-1,100	610	2.36	9-16	1,305-1885	2.5-6
H60E-SS	550	400-1,00	745	2.36	9-16	1,305-1885	Skid Steer
H68E	750	500-750	765	2.68	10-18	1,305-1885	4-7
H68E-SS	750	500-750	835	2.68	10-18	1,305-1885	Skid Steer
H75E	1,000	400-800	992	2.95	13-24	1,740-2,175	5-10
H100E	2,500	350-700	2,200	3.94	20-29	2,175-2,465	10-16
H140E	6,000	350-500	4,520	5.51	32-48	2,320-2,610	18-26
H155E	8,000	300-450	7,275	6.10	47-65	2,320-2,610	28-35
H165E	10,000	250-400	7,495	6.50	52-70	2,320-2,610	30-45





SHEARFORCE HR HAMMERS

ShearForce HR Series fully-hydraulic hammers are ideal for the toughest demolition, excavation, quarrying, and tunneling jobs.

- Fully hydraulic, utilizing the same operating design as Rammer, Cat, and Tramac hydraulic hammers.
- 5 models to fit 25 - 100 ton carriers.
- 8,000 to 16,500 ft. lb. models.
- Anti-blank firing system increases the lifespan of all components.
- Extremely powerful and durable.
- Industry Leading Warranty.

Model	Energy Class (ft lb)	Blows per minute	Weight (lbs)	Tool Diameter (in)	Oil Flow (gpm)	Max Operating Pressure (psi)	Carrier Weight (tons)
HR300	8,000	350-450	5,380	5.91	45-53	2,200	25-35
HR380	10,000	300-400	6,700	6.50	50-58	2,200	30-45
HR450	12,000	300-400	8,300	6.89	55-63	2,200	40-55
HR550	14,000	300-400	12,345	7.09	66-81	2,200	50-75
HR750	16,500	300-400	16,530	8.07	79-106	2,200	70-100

Weight: Includes top bracket, one tool, pin, bushings





SHEARFORCE RDP PULVERIZERS

ShearForce rotating demolition pulverizers are built with the strongest Hardox® and Weldox® steel, making them lighter weight and easier on your machine without sacrificing power and strength. With a streamlined design and powerful rotation capabilities, ShearForce pulverizers are the most reliable and effective tool for primary demolition and recycling of reinforced concrete structures. They're also ideal for secondary demolition, size reduction, and separation of rebar from concrete.

- Exceptional power-to-weight ratio.
- Speed boosting system provides faster cycle times compared to competitive models.
- Steel cutting blades in the jaw's throat with four useable sides.
- Heavy-duty planetary gear box provides precise and accurate rotation.
- Bolt-on teeth for efficient replacement of worn or damaged teeth, reducing down time.*

* Except RDP5 model.



Model	Weight (lbs)	Jaw Opening (inch)	Crushing Force Tip (tons)	Cutting Force Throat (tons)	Operating Pressure (psi)	Carrier Weight (tons)
RDP5	1,433	18.5	n/a	90	4,351	5-12
RDP16	3,858	27.5	75	215	4,931	15-22
RDP20	4,400	29.5	120	250	4,950	18-25
RDP23	5,516	35.5	135	270	4,950	23-32
RDP40	8,818	42.5	185	450	5,100	33-45





SHEARFORCE SP FIXED & ROTATING PULVERIZERS

ShearForce fixed and rotating pulverizers offer exceptional value for your crushing and demolition projects, and are the most reliable and powerful tool for secondary demolition and recycling of concrete. With its wider jaw, exceptional closing force, and fast cycle times, the ShearForce pulverizer provides excellent productivity in construction and demolition waste recycling, concrete reduction, and reinforced steel separation.



- Speed boosting system provides faster cycle times
- Bolt-on replaceable one-piece solid tooth system for simple maintenance and replacement of worn or damaged teeth, reducing down time.
- Rebar cutting blades can be flipped four times.
- Heavy-duty cylinder cover for protection of the cylinder rod.

Model	Weight (lbs)	Jaw Opening (inch)	Crushing Force Tip (tons)	Cutting Force Throat (tons)	Operating Pressure (psi)	Carrier Weight (tons)
SP20V	4,200	38	115	225	4,800	18-27
SP20VR	5,290	38	115	225	4,800	20-28
SP30V	6,150	41.5	160	320	4,800	25-45
SP30VR	6,835	41.5	160	320	4,800	28-45





SHEARFORCE ROTATING DEMOLITION CRACKERS

ShearForce rotating demolition crackers are designed for primary demolition; cracking concrete structures for quick dismantling of material. This attachment comes complete with a speed valve for fast cycle times, patented replaceable tooth sets for the cracking jaws to ensure easy replacement buildup, and maintenance of the working surface. The rotating demolition cracker uses a Dual Cylinder for extreme crushing power, precision, and speed providing optimal productivity on your demolition site.

- Heavy Duty 360 degree rotation.
- Tough and powerful – built to last and get the job done.
- Available in 7 sizes ranging from 13-50 ton excavators.



Model	Weight (lbs)	Length (in)	Max Opening (in)	Working Pressure (psi)	Oil Flow (us gpm)	Carrier Weight (tons)
RDC10	2094	65	27	4351	13-26	13-15
RDC15	3351	77	30	4931	48-66	15-22
RDC18	4012	79	35	5076	42-69	18-24
RDC21	4784	83	39	5076	53-74	22-29
RDC25	5467	85	43	5076	58-90	24-35
RDC36	7937	94	53	5076	69-100	34-50
RDC50	10,803	102	61	5076	90-122	45-65





SHEARFORCE ROTATING DEMOLITION GRAPPLES

ShearForce rotating demolition grapples are designed for demolition, handling, and sorting concrete, rock, wood, and metal materials. An oversized central hydraulic cylinder and load holding valve secure the load if the oil supply is cut off. These grapples are tough enough to handle your demolition projects and precisely place sorted material on your jobsite.

- 360° rotation for easy operation and precise handling.
- Grabbing tines completely made with HARDOX® steel.
- Delta-box style frame with dust-proof axle bearing points.
- Extreme heavy-duty rotation bearings.
- Durable and reversible bolted tip blades can be turned four ways, reducing operating costs.



Model	Weight (lbs)	Jaw Opening (in)	Jaw Width (in)	Capacity (cubic yards)	Max Operating Pressure (psi)	Carrier Weight (tons)
RDG15	2,447	64	33.5	0.5	4,641	12-17
RDG22	3,307	77	41.3	0.9	4,641	17-27
RDG30	4,508	84	44	1.0	5,076	27-38
RDG40	5,180	91.5	51	1.4	5,076	38-52





LABOUNTY SCRAP AND DEMOLITION SHEARS

LaBounty Scrap and Demolition Mobile Shears are engineered to maximize performance, longevity, and safety with significantly reduced maintenance time. Applications include scrap metal recycling and processing, road and bridge reconstruction, building demolition, wood demolition and recycling. Scrap yards around the world know LaBounty attachments as the industry leader in customer driven product design, engineering innovation, and service quality. ShearForce Equipment is proud to have been a LaBounty distributor for over two decades and for the past 10 years has been their top dealer in all of Canada.

- Available in a full range of rotating and non-rotating models.
- Models to fit 3 - 125 ton carriers and Jaw opening 10 to 48 inches.
- Patented Legend tip™ design is less maintenance and increases operating time.
- Patented LaBounty reversed, large bore, forged cylinder rods and seal design leads to longer seal life and higher operation pressure.
- Dual Guide Slide Puck system keeps the jaw aligned and reduces jamming.
- Rotating models offer 360° rotation for ease of use.
- Speed valves provide faster cycle times.



Model	Weight (lbs)	Jaw Opening (in)	Jaw Depth (in)	Reach 2nd Member (ft)	Carrier Weight 2nd Member (tons)	Carrier Weight 3rd Member (tons)
MSD 7R	1,200	11	10	6'0"	3	9
MSD 800R	2,750	15	17	7'2"	9	10
MSD 1000R	4,400	19	20	8'5"	10	18
MSD 1500R	7,440	21	25	10'0"	18	30
MSD 2000R	11,000	28	29	10'8"	22	40
MSD 2250R	12,700	30	30	11'7"	24	45
MSD 2500R	14,800	31	33	12'7"	30	50
MSD 3000R	17,100	34	37	13'1"	40	70
MSD 4000R	19,800	38	43	14'8"	45	75
MSD 4500R	21,300	39	43	14'3"	50	85
MSD 7500R	30,000	43	45	17'5"	75	Consult
MSD 9500R	45,600	48	52	22'0"	120	Consult





SHEARFORCE SCRAP AND DEMOLITION MOBILE SHEARS

Built with the strongest Hardox® and Weldox® steel, ShearForce Mobile Scrap and Demolition Shears are lighter weight and easier on your machine without sacrificing power and strength. With a slim profile and powerful rotation capabilities, ShearForce shears are an affordable and reliable option in your equipment fleet.

- Strong and powerful yet lighter weight than comparative models.
- Heavy-duty rotation motors for 360° rotation.
- Four edge reversible shear blades and replaceable piercing tip.
- Equipped with speed valves for faster cycle times.
- Superior proven reversed cylinder technology.
- Pivot group built with premium materials - hardened main pin, alloy bronze bearings, thrust washers, and hardened tie rod.
- Dual slide pucks and heavy-duty pivot components prevent upper jaw deflection and contribute to longer shear life (S25XP-S71R).
- Heavy-duty reinforcement tubes reduce stick deflection and 'buckling' of the shear stick.



Model	Weight (lbs)	Jaw Opening (in)	Reach 2nd Member (ft)	Cutting Capacity (in) Solid Pipe	Cutting Capacity (in) H-Beam	Cutting Capacity (in) I-Beam	Carrier Weight 2nd Member (tons)	Carrier Weight 3rd Member (tons)
S3.5R	772	10.5	61	1.5		5.5	1.6-3	3-7
S7R	1,653	13.5	69	1.75	4.75	8	4-8	8-15
S18R	4,409	19	98	2.5	7.25	10.5	10-20	16-27
S25XP	6,173	23	112	3.25	10.5	17.75	17-27	24-33
S38R	8,377	27.5	126	3.5	12.5	21.65	22-32	32-47
S54R	12,015	31	146	4.3	14.25	23.6	29-45	46-65
S71R	15,763	34	161	4.75	17.75	25.5	42-60	60-69



SCRAP AND DEMOLITION MAGNETS



ShearForce heavy-duty magnets offer easy handling of ferrous material in scrap and recycling yards and on demolition sites. Choose a style that works best for you and your machine:

- Hydraulic Magnets
- Hydraulic Magnets with Teeth
- Battery-Powered Magnets



HYDRAULIC MAGNETS

HMG hydraulic magnets were designed as a scrap and demolition magnet with flexibility in mind. With only two hydraulic hoses to connect, they are easy to install and allow the operator to control the magnet with the activation of the auxiliary hydraulic circuit.

- Generator mounted on top of magnet.
- Controlled with the joystick, auxiliary switch, or foot pedal.
- Allows user to change implements quickly and easily.
- Comes with chains and jump lines, or with top mount plate.
- Automatic flow control makes it easier to move between carriers.

Model	Weight (lbs)	Oil Flow (gpm)	Diameter (in)	Max Force Scrap (lbs)	Max Force Plate (lbs)	Carrier Weight (tons)
HMG 34	1,720	10-53	34	552	7,716	10-14
HMG 38	2,112	13-53	38	772	7,716	14-20
HMG 42	2,420	18-53	42	992	15,432	20-35
HMG 50	3,300	26-53	50	1,543	22,046	25-45



HYDRAULIC MAGNETS WITH TEETH

The generator, motor, and control are mounted on top of the HMG-T hydraulic magnet with teeth. They come with two sets of extended sorting claws that are designed to move and rake through debris, concrete, and demolition material allowing access to metal and rebar.

- Quick coupler ready.
- Easy to hook-up and go with automatic flow control.
- Generator mounted on top of magnet.
- Controlled with the joystick, auxiliary switch, or foot pedal.
- Allows user to change implements quickly and easily.



Model	Weight (lbs)	Oil Flow (gpm)	Diameter (in)	Max Force Scrap (lbs)	Max Force Plate (lbs)	Carrier Weight (tons)
HMG-T 38	2,486	13-53	38	772	7,716	14-20
HMG-T 42	2,893	18-53	42	992	15,432	20-35
HMG-T 50	3,960	26-53	50	1,543	22,046	25-45

BATTERY POWERED MAGNETS

BMG alternator and excavator battery powered magnets are easy to install and move between carriers. They also come with a dedicated electronic control box.

- No generator needed - magnet system runs off the 12 or 24-volt alternator excavator battery.
- Comes with complete installation kit.



Model	Weight (lbs)	Voltage (V)	Amperage Draw (Amp)	Minimum Alternator Size (Amp)	Diameter (in)	Max Force Scrap (lbs)	Max Force Plate (lbs)	Carrier Weight (tons)
BMG 26	550	12	30	80	26	331	4,850	4
BMG 32	1,080	24	30	60	32	550	6,175	8
BMG 36	1,364	24	45	80	36	551	8,047	14



SHEARFORCE STATIC RIPPERS



ShearForce static ripper attachments offer exceptional value for your construction projects. These static rippers are designed with a single-point tooth to maximize the machine's penetrating power and quick change lugging for minimal downtime. Ideal for loosening dirt, rock, and frost for excavation.

- Machined quick change lugging.
- Durable ripper shank.
- Wear-resistant plate and replaceable tooth for easier maintenance.
- Optimized for any machine class.
- Easy operation for trenching and breaking frozen ground.
- Cost-effective alternative to hydraulic rippers and hammers.
- Works well in frozen, hard pan, shale, caliche, and corral materials.

Model	Operating Weight (lbs)	Tooth Part Number	Shank Width (in)	Length/ Penetration (in)	Carrier Weight (ton)
SR1500	805	6Y-0359	3.15	36	10-17
SR2000	1210	4T-5452	3.94	48	18-27
SR3000	1647	4T-5452	3.94	54	28-37
SR4000	2579	4T-5452	3.94	60	38-47
SR6000	4182	4T-5503	4.75	66	58-65





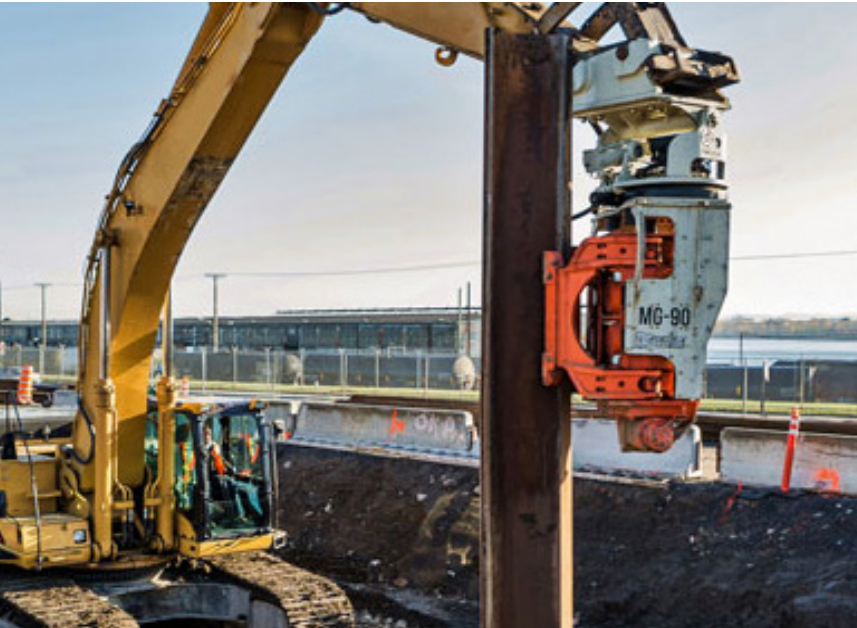
GILBERT GRIZZLY MULTIGRIP VIBRATORY PILE DRIVER

All Gilbert Grizzly MultiGrip Vibratory Pile Drivers come standard with 360-degree rotation, 40-degree tilt, and arms designed to work for Sheet pile, H-pile, and Round piles, which provides extreme versatility, and precise handling. This type of excavator attachment is ideal for a wide selection of pile driving applications, from shoring installation to marine dock construction to pile extraction, there is a good chance the MG series will be a valuable tool for increasing your job's profitability.

- Efficiently drive sheet piles, H-beams, and pipe with side grip or bottom jaw.
- Increased mobility and flexibility vs. conventional crane/hammer setups.
- 360° continuous heavy-duty rotation and 40° tilt system.
- SafeGRIP system ensures the jaws remain tightly closed in case of a broken line.
- Removable Quick Change jaw system. Change from driving sheet to driving pipe in 5 minutes vs. up to 5 hours with competitor models.
- Control and Assistance System. Assigned multiple operator profiles for data logging and operation tracking with an in-cab 7" touch screen.
- Semi Automatic Steering System allows the bucket cylinder to go into float with a touch of a button, allowing for less input from the operator and a straight pile installation



Model	Weight (lbs)	Eccentric Moment (kgm)	Max Pressure (psi)	Oil Flow (gpm)	Centrifugal Force (tons)	Carrier Weight Excavator (tons)
MG-60	5,619	6,78	4,496	45	60	22-30
MG-90	7,220	9,33	4,496	60	90	30-45





GILBERT HD HAMMER

The Gilbert Hydraulic Drop Hammer with its 8 foot vertical travel, delivers the most massive weight and drop in the industry. This hammer is suited for sheet piles, H-beams, tubes & timber piles and concrete piles.

- Angle sensor and Mass height sensor are included.
- Automatic (adjustable dwell and stroke parameters) or manual operating modes.
- Three different control screens to pick from.



Model	Weight (lbs)	Maximum Energy (ft lbs)	Maximum Vertical Travel (ft)	Mass Weight (lbs)	Mass Blows Per Minute (bpm)	Height (in)	Oil Flow (gpm)	Oil Pressure (psi)	Carrier Weight Excavator (tons)
HD Hammer	9,964	27,200	8	4,000	22	211	20	4,500	30-45





SHEARFORCE POST KING

Drive straight and true fence posts every time. ShearForce post drivers accept wood, pipe, and T-posts, making it useful to many industries in Canada including agriculture, farms, and ranching, orchards, vineyards, utility installation, and much more. The frame and back plate are constructed from heavy steel plate for durability. This rugged, easy-to-operate post pounder universally attaches to most skid loaders or excavators.

- Cupped driving head ensures centered and balanced driving.
- Very low maintenance, only one grease fitting and two moving parts.
- Unique design allows for driving posts in tight quarters, and maximizes reach.
- Low profile for improved visibility.



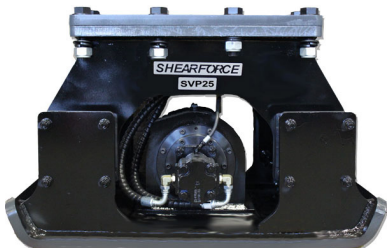
Model	Energy Class (ft lb)	Blow Per Minute	Weight (lbs)	Driving Cup Diameter (in)	Oil Flow (GPM)	Operating Pressure (psi)	Min Skid Steer Lift Cap (lbs)
H53PK	400	600-1,100	500	6	7-13	1,800	1,200
H68PK	750	500-900	800	7	11-18	2,000	1,500
H75PK	1,150	400-800	900	8	13-24	2,200	2,500





SHEARFORCE COMPACTORS

ShearForce hydraulic compactor vibratory plate attachments offer exceptional value for your construction projects. Reliable and durable, ShearForce compactors are ideal for your toughest compacting, trenching, slope stabilizing, post pounding, and pile driving jobs.



- Outboard shock mounts distribute vibration energy evenly across the entire baseplate, extending the life of the motor, bearings, and mounts.
- Auto flow control.
- Oil bath lubricated main bearings.
- Rubber mounts direct energy to the compaction plate, not the carrier's boom.
- Mounting options for any machine.

Model	Weight (lbs)	Vibrating Frequency (vpm)	Centrifugal Force (lbs)	Baseplate Size (in)	Oil Flow (gpm)	Operating Pressure (psi)	Carrier Weight (tons)
SVP5	551	2000	4000	16.5 x 25	10-25	2000	2-6
SVP9	780	2000	8000	24 x 32	15-30	2000	4-10
SVP17	1202	2000	12,000	27.5 x 38	25-60	2000	10-20
SVP25	1636	2000	16,000	31 x 40	30-65	2000	12-25
SVP35	2165	2000	24,000	36 x 48	30-65	2000	22-40





RAMMER COMPACTORS

Allied pioneered the concept of hydraulically operated Ho-Pac® vibratory compactor/drivers. These models use an eccentric, rotating weight that creates vibrations and impulse energy to compact the ground under the attachment, removing air pockets, leveling uneven material, and ensuring stability in the working area.

- Ideal for trench, slope and excavation compaction.
- Faster, less expensive technique for driving wood, steel and aluminum sheeting, 'H' and 'I' beams, piling, posts and seawalls.
- Four Function Valve controls flow, pressure, regenerations and oil flow direction.
- Oil Splash Lubrication provides maintenance free (no greasing) bearing lubrication.
- Tough coat hoses prevent cuts and extend wear life.



Model	Weight (lbs)	Centrifugal Force (lbs)	Vibrations Per Minute	Baseplate Size (in)	Oil Flow (gpm)	Max Pressure (psi)	Carrier Weight (tons)
400B	375	4,000	2,000	13 x 25	6-18	2,800	1.5-6
700B	610	6,400	2,000	18 x 27	6-18	2,800	4-10
1000B	950	8,000	2,000	24 x 28	12-21	2,000	4.5-15
1600B	1,565	16,000	2,100	29 x 32	25-43	3,000	9.5-22.5
2300	2,216	24,000	2,100	34 x 36	47	2,200	17.5-60
4000	4,900	40,000	2,100	42 x 48	62-86	2,200	38.5-75





STANLEY COMPACTORS

Stanley hydraulic mounted compactors or hoe-packs offer more than five times the efficiency of handheld compactors and are effective for both flat and slope compaction. Hydraulic compactors can also be used as a driver for piles, posts, I-beams and more, on skid steers, backhoes, mini-excavators, and large excavators.



- Outboard shock mounts distribute compactor vibration energy evenly across the entire base plate. Keeps the attachment level, extending the life of the motor, bearings, and mounts.
- Rugged Construction - box-section base plate construction with four corner suspension.
- Flow control valve to protect from over speeding.
- Cross check valve prevents sudden jolting shock to motor or bearings.
- Hose block prevents hose twisting and wear.
- High pressure motor seals prevents damage from pressure spikes.

Model	Weight (lbs)	Vibrating Frequency (vpm)	Centrifugal Force (lbs)	Baseplate Size (in)	Oil Flow (gpm)	Operating Pressure (psi)	Carrier Weight (tons)
HSX3	370	2,100	3,400	18.8 x 20	12-25	2,500	2.5-6.5
HSX6	850	2,000	6,400	23.5 x 26	12-25	2,500	4.5-15
HSX11	1,425	2,000	11,350	27 x 30	28-60	2,500	8-27.5
HSX22	2,200	2,100	22,000	32 x 42	42-70	2,500	27-71





SHEARFORCE FLAIL MOWERS

ShearForce’s FM Series excavator-mounted flail mowers are designed to cut grasses, brush, and brambles. They can also access locations that are inaccessible to conventional mowers and tractors, including steep slopes, riverbanks, ditches, and hilly areas.



- Available with J-style blades or hammer knives for optimal performance in all applications*
- Hydraulic bypass protects the hydraulic motor by diverting sudden build-ups of pressure.
- Mechanical Float Adapter allows smooth mowing operation following the contour of the ground*
- Protected Rotor ends keep vines and cable that wrap around the rotor from damaging the bearings.
- No case drain line is required.

* Available on select models.

Model	Weight (lbs)	Cutting Width (in)	Working Pressure (psi)	Oil Flow (gpm)	Number of Knives/Hammers	Carrier Weight (tons)
FM600	187	23.6	3485	8-11	22	1.7-3
FM800	375	31.5	3485	13-19	18	3-6
FM1100	441	43.3	3485	13-19	26	5-10
FM1300	1190	51	4267	23-26	22	13-15

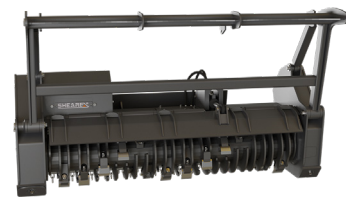




SHEAREX FORESTRY MULCHERS

The Shearex forestry mulcher for excavators allows you to be precise and fast with your mulching and tree clearing work. With the greater agility of the boom-mounted excavator brush cutter, you can rise to the toughest of mulching challenges. They are the ultimate tool for fast and efficient roadside maintenance, invasive species removal, land clearing, and underbrush maintenance. The Front-Mount Mulcher also offers the speed and power to complete any land clearing job while attached to a skid steer, a CTL or any front-loader.

- Versatile and easy to use land clearing tool ideal for right-of-way path cutting, forest fire prevention, road, pipeline, and transmission line development and maintenance.
- Convex DX protection system comprised of four types of fins that limit the amount of material cut with each pass and concentrates the smaller material towards the center of the blade.
- Blade angle optimized for a perfect cut with every pass. The new blade and blade mount design allows for greater durability and cutting power.



Model	Weight (lbs)	Cutting Width (in)	Number of Knives on Rotor	Min Req'd Continuous Flow (gpm)	Target Material Diameter (in)	Carrier Weight (tons)
HM-60SR	2,500	59	21	23	6	Skid Steer
HM-70SR	3,100	75	27	35	8	Skid Steer
VM-25SK	950	25	9	13	<4	5-8
VM-35SK	1,150	35	11	20	4	8-12
VM-40SL	1,500	40	13	25	6	10-15
VM-50SR	2,100	46	17	33	10	15-20
VM-60SR	2,450	57	21	35	15	20-25
VM-65SV	3,500	62	21	50	20	25-40





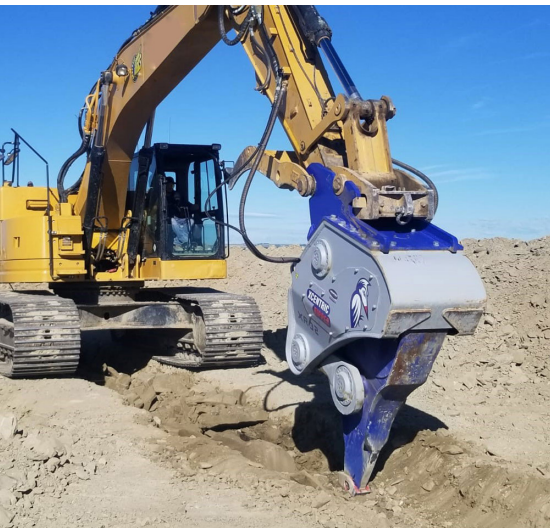
XCENTRIC RIPPERS

Introducing the Xcentric Ripper®. A revolution in excavation and demolition. The Xcentric Ripper® outperforms traditional hydraulic hammers in nearly every type of extraction and trenching application, particularly in medium hardness rock with natural fracturing and layers. Using patented Impact Vibration Accumulation Technology, the attachment works with the natural rigidity of the rock, and the vibrations that are produced shake the material to deepen cracks for easier breakup. It is an exceptional tool for frozen ground excavation, rock excavation, dredging, trenching, underground mining, and even underwater applications.

- Easy operation with low noise.
- Unbelievable power and versatility.
- Easy on your machine's pins and bushings.
- Low maintenance.
- Field replaceable ripper teeth.
- Patented impact vibration accumulation technology.
- A safe, easy, and environmentally friendly alternative to drilling and blasting options.



Model	Weight (lbs)	Frequency (per min)	Min Oil Flow (gpm)	Operating Pressure (psi)	Carrier Weight (tons)
XR10	2,050	1,500	16	2,175-2,610	7-10
XR15	3,747	1,400	32	2,320-2,755	11-16
XR22	5,511	900	42	2,320	18-23
XR32	8,157	1,100	50	3,480	24-32
XR42	9,260	1,100	53	3,480	32-40
XR52	10,800	1,100	70	4,061	40-55
XR62	15,432	1,100	74	4,061	55-70
XR82	22,050	700	110	4,350	70-90
XR122	33,070	600	137	4,350	100-140





XCENTRIC CRUSHER BUCKETS

Xcentric® High Performance Crusher Buckets are perfect for a wide range of different industries and applications. Xcentric Crusher Buckets are a type of high-performance excavator crusher equipment for crushing both wet and dry materials right on the jobsite. Xcentric crusher buckets are easy to use and can produce valuable material right onsite, in a variety of sizes without the additional trucking costs.

- Double the production of a conventional crusher bucket*
- Circular jaw movement allows for crushing of wet materials.
- Design prevents large pieces from getting stuck in the bucket's mouth.
- Simple, quick and precise output size adjustment.
- Updated kinematics and jaw movement, achieving higher production rates and significantly less stagnation, requiring less power from the excavator.
- Maintenance-free power train increases the reliability of the machine in the long term.
- The chassis and components are made of Hardox 400.

*vs. comparable models at max. particle size.



Model	Weight (lbs)	Bucket Capacity (M3)	Oil Flow (gpm)	Operating Pressure (psi)	Output Per Hour (M3)	Carrier (tons)
XC5F	3747	0.4	24	3480	4-70	4-6 Skid Steer
XC8	2,645	0.35	21	3625	3-70	8-11
XC9	3,439	0.35	25	3625	4-70	10-13
XC13	3,968	0.42	32	3625	8-74	13-16
XC19	4,850	0.5	42	3625	10-77	16-21
XC21	5,952	0.7	42	3625	10-77	20-25
XC24	8,157	1.0	48	3625	19-87	24-33
XC29	8,818	1.2	53	3625	27-95	28-38





MULTAVEX VIBRA SCREENING BUCKETS

The MultaVEX Vibra screening bucket has a simple design and a reliable operating principle: the camshaft moves the rods at the bottom of the bucket alternately at a different pace. The bucket screens soil by vibrating and has no rotating parts leading to low maintenance and repair costs. Changing the screen size is easy and can be done quickly onsite. The MultaVEX Vibra Screening bucket has a wide range of applications; suitable for demolition debris, aggregate, quarry, crushed rock, compost material, backfill, drain rock and sand screening, and pipeline bedding.



- The screening size can be adjusted from 25 mm to larger sizes in just a few minutes.
- Frame material made of wear-resistant 400HB steel.
- The operating costs of this screening bucket are low compared to others.
- Designed to operate on minimal flow and medium pressure.
- Also suitable for pairing with wheel loaders and tilt rotators.

Model	Weight (lbs)	Bucket Capacity (y3)	Hydraulic (bar)	Width, Cutting Edge (mm)	Screening Size (mm)	Carrier Weight (tons)
2-4S	419	0.09	200	700	-	3-5
3-6S	661	0.27	200	830	50	4-8
5-10S	1,257	0.48	200	1000	50	6-11
7-12S	1,543	0.54	200	1200	50	8-13
10-15S	2,094	0.81	200	1200	55	11-16
13-18S	2,425	0.95	200	1400	55	14-19
15-25S	3,439	1.56	200	1500	50	18-30
25-35S	4,233	1.56	200	1500	70	30-40
30-40S	4,299	1.83	200	1600	-	30-40
40-50S	6,834	2.61	200	1700	-	35-50





SIMEX VSE SCREENING BUCKETS

The Simex VSE Screening Buckets utilize an auger style design and is the only option on the market with the ability to adjust the auger's output gap immediately in real time – no extra hydraulics required. A hydraulic diverter valve wired to a switch in the cab that diverts flow from the augers to the cylinder controlling the gap. This provides much more versatility with changing output size requirements and can greatly improve performance when the material gets wet or sticky.

- Immediate adjustment of output size from the excavator cab.
- Electric over hydraulic solenoid activated (no additional lines required).
- Effective with wet material.
- High productivity and simple operation.
- Easy to change between screening tools/rotor styles.
- Easily replaceable screening tools and wear parts.



Model	Weight (lbs)	Bucket Capacity (yd ³)	Bucket Opening (in)	Max Operating Pressure (psi)	Operating Flow (gpm)	Carrier Weight (tons)
VSE 10	2,125	0.52	34	3,600	24-33	8-13
VSE 20	3,080	0.92	43	3,600	27-40	12-18
VSE 30	4,060	1.30	50	3,600	44-58	16-30
VSE40	6,000	2.35	53	3,600	48-74	30-45





SIMEX ROTARY CUTTERS



Simex rotary cutters are ideal for trench cutting on hard and compact materials, concrete or rock wall profiling, quarry works, demolition work, and dredging. The dual-head drum cutter features an internal hydraulic piston motor that provides direct power to the cutting drums for maximum efficiency and minimum non-operational space between cutters.

- Produces small diameter spoil.
- Low noise and environmentally friendly.
- Simex high strength patented drive shaft design is not subject to the working stress of the rotary cutters, which are independently supported by long life bearings.
- Indispensable in cases of excessive ground weakness of excavation systems where hammers are ineffective.

Model	Weight (lbs)	Oil Flow (gpm)	Max Operating Pressure (psi)	Cutting Speed(m/s)	Carrier Weight (tons)
TF200	661	12-21	5100	2.6-4.0	2.5-7
TF400	1036	17-32	5100	2.9-3.8	6-12
TF600	1410	24-40	5100	2.4-3.7	9-16
TF850	2515	37-50	5800	2.4-3.6	14-22
TF1100	3230	45-66	5800	2.2-3.5	20-34
TF2100	5315	63-90	5800	2.2-3.8	28-50
TF3100	8050	92-132	5800	2.2-3.2	50-75





MOTOFOG DUST SUPPRESSION SYSTEMS

Powerful, affordable, and portable dust control equipment for your jobsite.

Motofog is a portable dust suppression system ideal for any jobsite. These industrial misting machines effectively control dust, debris, and odors that are created during construction, demolition, mining, sawmilling, and many other industrial applications.

Motofog is available with Diesel or Gas motors.

- Great for demolition, hazardous material removal, including asbestos, and odor control.
- Easily transported for quick placement around your project area.
- Max range distance up to 54 meters (180 ft).



Model	Weight (lbs)	Motor	Engine Power (HP)	Water Range (ft)	Water Pressure (psi)	Water Consumption (gpm)
MFJ10B	143	Gas	4.96	49	363-1160	1.6-3.4
MF20B	341	Gas	8.85	82	363-1160	3.7-6.3
MF40D	456	Diesel	9.80	115	363-1160	5.3-11
MF60D	960	Diesel	25.3	180	363-1160	13.2-26.4





TINBIN DRY VAC

Turn your excavator into a suction truck with the Tinbin TC2 dry vac excavator attachment. It rotates to get into those tight spots unreachable to a hydro-vac truck and allows you to dump excavated materials right on site and avoid slurry disposal charges. The Tinbin TC2 allows you to excavate quickly, cleanly and precisely. Dry suction excavation is non-conductive and allows you to stay on site longer, boosting productivity.

- Reduced operating costs vs. hydrovac trucks.
- Significant reduction in damaged underground utilities.
- Attaches to standard excavator boom.
- Easy to unload in a bin or on job site.
- Quiet operation.
- Keep on site and use whenever you need.
- Works great for removing silt, mud & oil spills on water.
- Fits carriers >16 tons.



Model	Weight (lbs)	Storage Capacity (M3)	Suction Depth (ft)	Suction Tube Diameter (in)	Oil Flow Rate (Gpm)	Max Operating Pressure (psi)	Carrier Weight (tons)
TC2	2860	0.75	11.5	8	30-33	4060	>16





YAMAMOTO ROCK SPLITTERS

Yamamoto Hydraulic Rock Splitters excavate hard rock without the worry of vibrations, flyrock, or hazardous noise. Hydraulic rock splitters are a solid alternative to blasting methods. The rock splitter method is based on the traditional wedge and feather methodology, but uses hydraulic power to split the rock instead of impact force. The splitter is normally hung on an excavator and uses the hydraulic power of the carrier. But it can easily be used on a crane or custom carrier, it all depends on the type of project. The simple installation method allows it to be moved from carrier to carrier without any major modifications, so the same splitter can be used in many different types of applications.

- Uses hydraulic power to split the rock instead of impact force.
- Powerful and efficient with 100-400+ cubic meters of production per shift.
- Simple, reliable and durable with minimal moving parts.
- Zero noise! No impact or vibration.



Model	Weight (lbs)	Drill Hole Diameter (in)	Drill Hole Depth (in)	Splitting Force (tons)	Splitting Distance (in)	O/A. Pressure Range (gpm)	Carrier Weight (tons)
HRB-1000	1,433	4	59	2,250	1	5076-7252	12+
HRB-1700	3,310	5	98.5	3,550	1.2	5076-7252	20+



SERVICE YOU DESERVE, WHEREVER YOU NEED IT

Whether you need a new part, major repairs, or just some friendly advice, our team is here for you. We deliver prompt service and top quality warranty support.

Our ShearForce service trucks are equipped with all the tools needed to get your hydraulic attachments and equipment back up and running as quickly as possible.

Our product support team is here to service and repair your hydraulic attachments and mobile crushing equipment. Contact us for details on in-shop and on-site repair and maintenance services.



ATTACHMENT REPAIRS AND INSTALLATIONS



EXCAVATOR HYDRAULIC PLUMBING AND REPAIRS



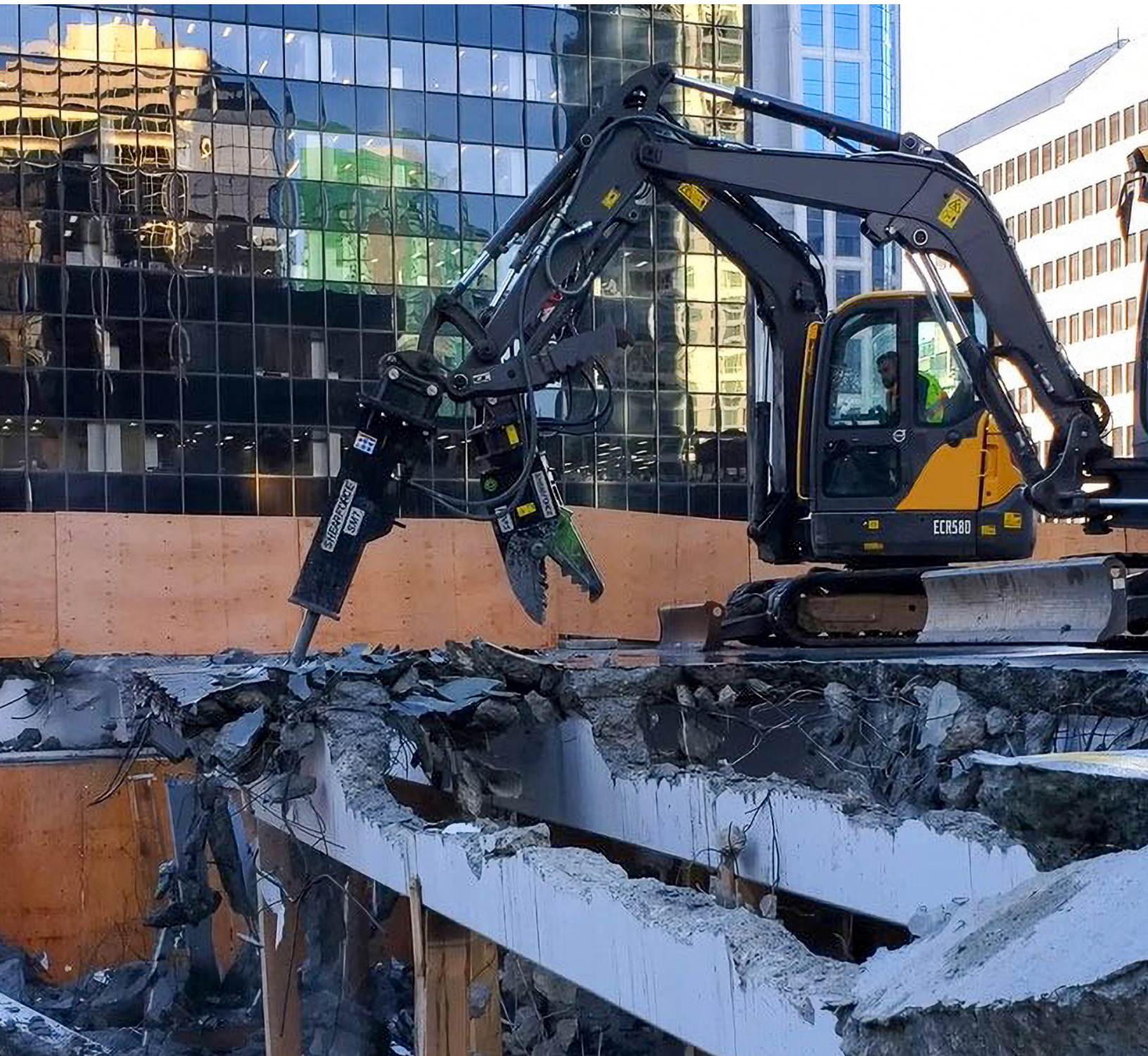
MOBILE SCRAP SHEAR REPAIRS



HAMMER TOOLS AND WEAR PARTS



TOLL FREE 1.800.255.5211



SHEARFORCE.CA