



MB156



MB256



MB05



MB556



MB656



MBX15

### Lightweight, extremely powerful breakers

- Minimal moving parts, only two for less maintenance, better performance and less service.
- Superior valve design for operation within a broader range of pressures and flows with less heat and stress on components.
- Added steel reinforcement at lower end of housing to protect housing and power-cell.
- Side-plate bolt locking system keeps bolts from loosening.
- Supported power-cell by rubber cushions and urethane wear plates to absorb shock, vibration and reduce wear - MB556, MB656 and MBX15.
- Box style housing - MB556, MB656 and MBX15.
- Direct acting nitrogen chamber boosts the power of each hammer blow.



### MODEL SPECIFICATIONS

	Unit	MB156	MB256	MB05	MB556	MB656	MBX15
Impact Energy Class	Ft/lbs	175	350	550	750	870	1500
	J	250	475	750	1000	1200	2030
Blows Per Minute	BPM	600-1200	700-1200	650-1550	590-1100	600-1000	400-800
Weight (with Tool & Mounting Brkt)	Lbs	173	493	480	752	872	1168
	Kg	79	224	218	340	396	531
Length (with Tool & Mounting Brkt)	In	42	51	53	63	66.5	69
	Mm	1069	1295	1350	1600	1689	1760
Tool Working Length	In	11	15	15	15	18	16.6
	Mm	279	381	381	381	457	426
Tool Diameter	In	1.75	2.5	2.6	2.7	3	3.3
	Mm	44	64	67	69	76	85
Hydraulic Pressure	PSI	1800-2100	1400-1700	1500-2000	1600-2000	1700-1900	1885-2200
	BAR	124-144	96-117	100-140	110-138	117-131	130-152
Flow Range	GPM	4-10	9-16	10-22	12-22	16-24	15-25
	LPM	15-38	34-60	38-83	45-83	60-91	56-95
System Relief Pressure (Minimum Cracking)	PSI	2600	2600	2600	2600	2600	3000
	BAR	180	180	180	180	180	206
Sound Power Level (LW)	dBA	116	122	125	124	121	126

Specifications and Features are Subject to Change Without Notice

### RECOMMENDED BREAKER TO CARRIER SIZE

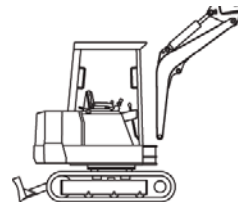
	Unit	MB156	MB256	MB05	MB556	MB656	MBX15
Skid-steer Size	Lb	1500-3000	3000-7000	4500-7000	4500-10000	8000-14400	-
	Kg	681-1362	1362-3178	2045-3182	2043-4536	5448-6538	-
Mini Excavator Size	Lb	1900-6000	4000-10000	5000-13500	7000-16000	9000-20000	14000-26000
	Kg	855-2700	1816-4500	2273-6075	3175-7200	4100-9000	6300-11800
Backhoe Size	Lb	-	4000-10000	5000-13500	7000-16000	9000-20000	14000-26000
	Kg	-	1816-4500	2273-6075	3175-7200	4100-9000	6300-11800



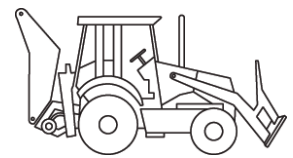
#### Using the carrier selection chart:

Choosing the right attachment is dependent upon two factors ; application and available carrier. Find your carrier weight according to this chart. Match the carrier weight to the recommended Mounted Breaker model number.

Small & Large  
Excavators



Backhoes



### MODEL ORDERING

Model	Part No.	Description
MB156	MB15600	Stanley - Excavator Mount - 6" and 4" Pin Centers**
	MB15614	Stanley - Excavator Mount - Flange Top*
	MB1561SBN	LaBounty - Narrow Skid Steer - 11" Pin Centers**
	MB15641	Stanley, Q-Tach for Walk Behind - 6" and 4" Pin Centers**
MB256	MB25600	Stanley - Excavator Mount - 9" Pin Centers**
	MB25600SS	Stanley - Skid Steer - 9" Pin Centers**
	MB25603	Stanley - Excavator Mount - Flange Top*
	MB25641	Stanley - Q-Tach for Walk Behind - 9" Pin Centers**
	MB2570	LaBounty - Excavator Mount - 11" Pin Centers**
	MB2570SB	LaBounty - Cradle Skid Steer - 11" Pin Centers**
	MB2570SS	LaBounty - 2 Position Skid Steer - 11" Pin Centers**
	MB2570XC	LaBounty - Excavator Mount - Exchange Top
	MB2570XCS	LaBounty - Skid Steer - Exchange Top Combo
MB05	MB05e00	Stanley - Excavator Mount - 9" Pin Center** and Flange Top*
	MB05s02	Stanley - Cradle Skid Steer - 9" Pin Centers** and Flange Top*
	MB05e04	Stanley - Excavator Mount - CP027, TAG QC27 Top
	MB05s04	Stanley - Skid Steer / CP027, TAG QC27 Combo
	MB05e05	Stanley - Excavator Mount - Exchange Top
	MB05s05	Stanley - Skid Steer - Exchange Top Combo

Model	Part No.	Description
MB556	MB55600	Stanley - Excavator Mount - Flange Top*
	MB55600SS	Stanley - Skid Steer - Fixed 20 Degrees
	MB55601	Stanley - Excavator Mount - 14" Pin Centers**
	MB55607	LaBounty - Excavator Mount - 14" Pin Centers**
	MB5570SB	LaBounty - Skid Steer - Fixed 20 Degrees
	MB5570XC	LaBounty - Excavator Mount - Exchange Top
	MB5570XCS	LaBounty - Skid Steer - Exchange Top Combo
MB656	MB65603	Stanley - Excavator Mount - Flange Top
	MB65607	Stanley - Excavator Mount - 14" Pin Centers**
	MB65609	Stanley - Excavator Mount - 1/4 Yard Wain Roy, C&P, TAG
	MB6560XC	LaBounty - Skid Steer - Exchange Top Combo
MBX15	MBX15E03	Stanley - Excavator Mount - Flange Top*
	MBX15E00	Stanley - Excavator Mount - 14" Pin Centers**
	MBX15E09	Stanley - Excavator Mount - 1/4 Yard Wain Roy - C&P, TAG

Information information pertaining to hydraulic breaker models:

\* "Flange Top" for use with quick coupler applications requires custom fit mounting bracket (sold separately).

\*\* "Pin Centers" for direct pin to carrier boom applications, requires mounting pak (sold separately).

Most breakers come standard with a Conical Bit, except for the MB05, which has a Chisel Cross Cut Bit

**OPERATIONAL ACCESSORIES - SMALL BREAKERS**

Model	Part No.	Description
MB156	26257	Tool Bit, Asphalt Cutter, Cross Cut
	26259	Tool Bit, Conical Point
	26260	Tool Bit, Chisel, Cross Cut
	26261	Tool Bit, Chisel, Line Cut
MB256	25170	Tool Bit, Asphalt Cutter, Cross Cut
	25171	Tool Bit, Asphalt Cutter, Line Cut
	27281	Tool Bit, Conical Point
	27282	Tool Bit, Chisel, Cross Cut
	27283	Tool Bit, Chisel, Line Cut
	27284	Tool Bit, Blunt Point
MB05	69863	Tool Bit, Conical Point
	69864	Tool Bit, Chisel, Cross Cut
	69865	Tool Bit, Chisel, Line Cut
	69866	Tool Bit, Blunt Point
	69867	Tamping Pad
	72911	Tool Bit, Asphalt Cutter, Cross Cut
	72912	Tool Bit, Asphalt Cutter, Line Cut
	MB556	56547
56548		Tool Bit, Blunt Point
56549		Tool Bit, Chisel, Line Cut
56550		Tool Bit, Chisel, Cross Cut
56551		Tamping Pad
MB656	28123	Tool Bit, Conical Point
	28124	Tool Bit, Line Cut
	28125	Tool Bit, Cross Cut
	28126	Tool Bit, Blunt Point
	18942	Tamping Pad
MBX15	71623	Tool Bit, Conical Point
	71624	Tool Bit, Chisel, Cross Cut
	71625	Tool Bit, Chisel, Line Cut
	71726	Tool Bit, Blunt Point
	71627	Tool Bit, Moil Point



Moil Point



Conical Point



Cross-cut Chisel



Line-cut Chisel



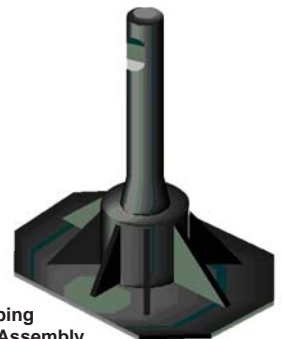
Blunt Point



Asphalt Cutter Line-cut



Asphalt Cutter Cross-cut



Tamping Pad Assembly