

SPECIFICATIONS

MODEL	(1) EXCAVATOR WEIGHT APPROX 2nd Member		(1) EXCAVATOR WEIGHT APPROX 3rd Member		(2) ATTACHMENT WEIGHT APPROX		SHEAR OPENING		SHEAR DEPTH		(3) REACH	
	(lbs)	(m tons)	(lbs)	(m tons)	(lbs)	(kg)	(in)	(mm)	(in)	(mm)	(ft-in)	(m)
MSD 7	6,000	3	12,000	5	950	431	10	254	11	279	4' - 7"	1.4
MSD 7R	7,500	3	15,000	7	1,100	499	10	254	11	279	5' - 0"	1.5

(1) Excavator weight recommendation is based on standard excavator weights and boom and/or arm lengths. All applications must be approved by Stanley LaBounty prior to sale.

(2) Attachment weight can vary depending upon mounting bracket, appropriate cylinder required to maximize base machine operating pressures, and any options installed on the shear.

(3) Typical reach of bottom and back bracket is listed. Reach can vary depending upon the bracket needed for the base machine. Total reach may be substantially increased by mounting the attachment to the stick and bucket linkage of a large base machine. Stanley LaBounty sales staff are available to assist in reach/base machine sizing.

NOTE: Weights, dimensions and operating specifications listed on this sheet are subject to change without notice. Where specifications are critical to your application, please consult Stanley LaBounty.

LaBounty MSD7 and MSD7R

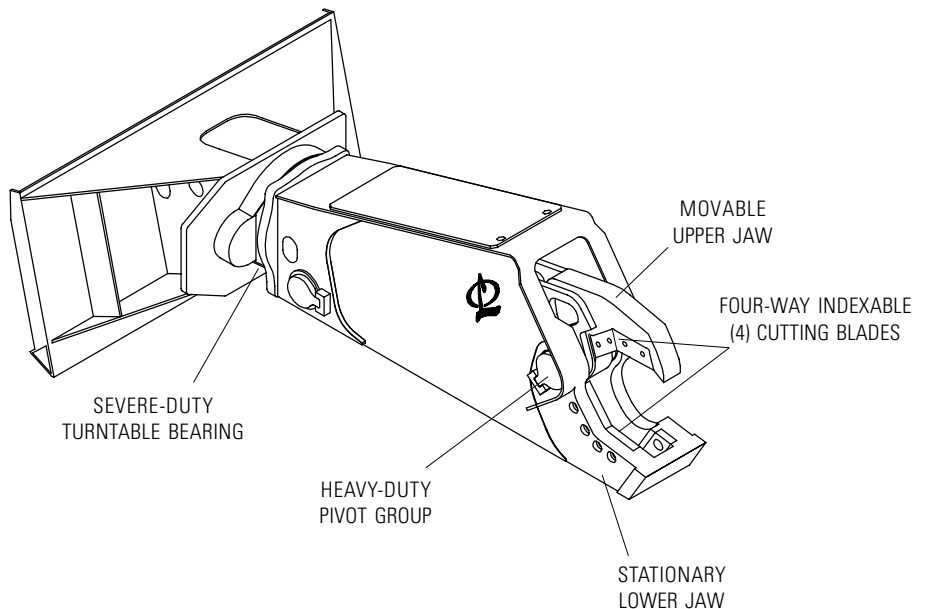
(R indicates rotating model) Mobile Shears are ideal for ferrous and non-ferrous scrap applications. The MSD7/MSD7R will easily H- and I-beams, plate, rebar, pipe, round stock, wire and concrete. The primary applications for the MSD7 and MSD7R include both ferrous, and non-ferrous scrap yards and demolition applications where maneuvering into tight areas is required.

MSD Mobile Shears Feature four-way indexible blades, replaceable wear parts for easy maintenance, and a patented design offering maximum cutting strength and reach with minimal weight. MSD Rotating Mobile Shears feature 360° continuous rotation and a severe-duty turntable bearing.

Built to Last, LaBounty Mobile Shears are manufactured in the U.S.A. using abrasion-resistant, high-strength alloy steel for minium weight and maximum durability and reach.

MSD7R Mobile Shear Components

(with skid-steer bracket shown)



SAFETY FIRST! Please read, observe and follow the safety precautions found in the LaBounty Safety, Operation & Maintenance Manual shipped with your attachment.



MSD MOBILE SHEAR OPTIONS, ACCESSORIES AND WEAR PARTS

The items listed below are available for all MSD Mobile Shears

- 4-way Indexible, Replaceable Cutting Blades
- Bolt-in Replaceable Guide Blade
- Weld-in Replaceable Piercing Tip
- At-Factory Upgrade and Rebuilding Services
- Selector Valve which supplies oil to the rotator
- Mini-Excavator/Skid-Steer Adapter Bracket

MSD7 / MSD7R Appetite (Mild Steel and Concrete)

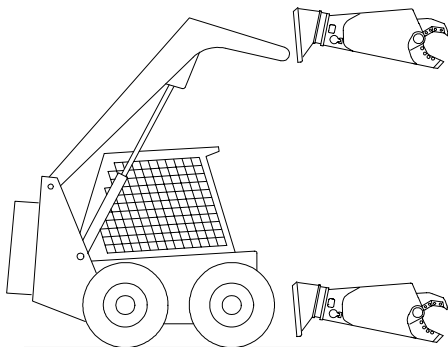
The appetite data in the chart below are typical. Please contact Stanley LaBounty for any other appetite or application questions.

I-BEAM	PLATE	SOLID ROUND	PIPE	CONCRETE
7 in. (178 mm)	1/4 in. (6.4 mm)	1.25 in. (32 mm)	5 in. (127 mm)	8 in. (203 mm)

MSD Shear Operation (Rotating Model Shown)

Mobile Shear controls will vary with the type of base machine on which the shear is mounted and depending on whether it is mounted as a second or third member.

SECOND MEMBER SKID-STEER MOUNT



Warranty. The LaBounty MSD7 and MSD7R Mobile Shears carry a limited warranty against defects in material and workmanship for 6-months or 750-hours.

Stanley LaBounty reserves the right to repair or replace only those parts which prove to have been defective at the time of purchase.

Ask your Stanley LaBounty dealer to explain this warranty in detail.

Stanley LaBounty offers several cylinder sizes to optimize the performance of the MSD7R Mobile Shear. Recommended pressure and flow ranges are as follows:

FUNCTION	PRESSURE	FLOW
OPEN AND CLOSE	3601 - 4350 psi (248 - 300 bar)	13 - 22 gpm (49 - 83 lpm)
	3001 - 3600 psi (207 - 248 bar)	14 - 24 gpm (53 - 91 lpm)
	2000 - 3000 psi (138 - 207 bar)	17 - 29 gpm (64 - 110 lpm)
ROTATION	1350 - 2000 psi (92 - 138 bar)	4 - 6 gpm (15 - 22 lpm)

For skid-steer mounting, typically the rear auxilliary hydraulic circuit is used to operate the open and close function of the jaws. An optional selector valve can be ordered from Stanley LaBounty to supply oil to the shear's rotator. For mini-excavator mounting or rubber-tire backhoe loaders, please consult Stanley LaBounty for proper hydraulic recommendations.

Stanley LaBounty

1538 Highway 2

Two Harbors, MN 55616 USA

Tel: (218) 834-2123 Fax: (218) 834-3879

STANLEY®

LaBounty®